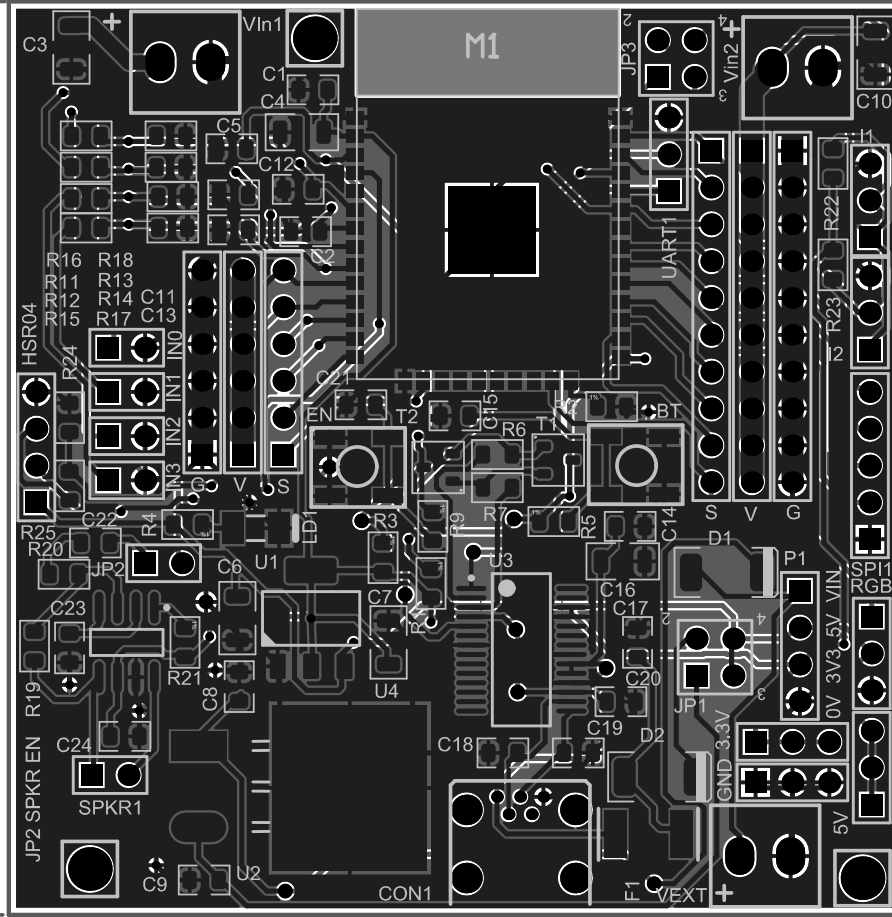


Title		
Size A3	Number	Revision
Date: 23/10/2017	Sheet of	
File: C:\esp32dev\singlemodule.SchDoc	Drawn By:	

62.98 (mm)



61.59 (mm)

Comment	Description	Designator	Footprint	LibRef	Quantity
Header 3	Header, 3-Pin	3.3V, 5V, GND	HDR1X3	Header 3	3
1u	SMD-0805 50V Y5V +80/-20%	C1, C5, C23, C24	C0805(2013)	C-0805 50V 1u	4
2.2u	SMD-0805 16V Y5V +80/-20%	C2, C11, C12, C13	C0805(2013)	C-0805 16V 2.2u	4
22u	SMD-1206 16v X7R +10%	C3, C7, C10	C1206(3216)	C-1206 50V 22u	3
100uf	SMD-1206 6.3V X7R 10%	C4	C1206(3216)	C-1206 100V 1u	1
10uf	SMD-1206 16v 10uf X7R +10%	C6	C1206(3216)	C-1206 50V 10u	1
22u 35v	SMD-0805 50V Y5V +80/-20%	C8, C9	C0805(2013)	C-0805 50V 22u	2
100n	SMD-0805 50V Y5V +80/-20%	C14, C17	C0805(2013)	C-0805 50V 100n	2
1n	SMD-0805 50V COG 5%	C15, C21	C0805(2013)	C-0805 50V 1n	2
4.7u	SMD-1206 50V X7R +10%	C16	C1206(3216)	C-1206 50V 4.7u	1
47pf	SMD-0805 50V Y5V +80/-20%	C18, C19	C0805(2013)	C-0805 50V 47pf	2
10n	SMD-0805 50V Y5V +80/-20%	C20	C0805(2013)	C-0805 50V 100n	1
330n	SMD-0805 50V Y5V +80/-20%	C22	C0805(2013)	C-0805 50V 330n	1
USB Mini		CON1	USB Mini r2	USB 2.0 Type B MINI	1
1N5819	SMD 40V 1A	D1, D2	SOD87/MLL41	1N5819-Melf	2
	Fuse	F1	F1812	F	1
Header 4	Header, 4-Pin	HSR04, P1	HDR1X4	Header 4	2
I2C	Header, 3-Pin	I1	HDR1X3	Header 3_1	1
I2C1	Header, 3-Pin	I2	HDR1X3	Header 3_1	1
Header 2X2	Header, 2-Pin, Dual row	JP1, JP3	HDR2X2	Header 2X2	2
SPKR EN	Header, 2-Pin	JP2	HDR1X2	Header 2	1
LED GREEN	LED 3.2X2.4MM 574NM GRN CLR SMD	LD1	KB SMD APD3224CGCK-F01	LED SMT GRN 1206	1
ESP32S_Module	Esp-32S	M1	ESP32S_W	ESP32S_Module	1
G	Header, 6-Pin	P2	HDR1X6	Header 6	1
V	Header, 6-Pin	P3	HDR1X6	Header 6	1
S	Header, 6-Pin	P4	HDR1X6	Header 6	1
UART1	Header, 3-Pin	P5	HDR1X3	Header 3	1
G	Header, 10-Pin	P6	HDR1X10	Header 10	1
V	Header, 10-Pin	P7	HDR1X10	Header 10	1
S	Header, 10-Pin	P8	HDR1X10	Header 10	1
PAD3mm		P9, P10, P12	PAD3mm	PAD3mm	3
IN0	Header, 2-Pin	P13	HDR1X2	Header 2	1
IN3	Header, 2-Pin	P14	HDR1X2	Header 2	1
IN1	Header, 2-Pin	P15	HDR1X2	Header 2	1
IN2	Header, 2-Pin	P16	HDR1X2	Header 2	1
BT		PB1	4x4 Tact Switch	SW-PB RS	1
EN		PB2	4x4 Tact Switch	SW-PB RS	1
5.1k	SMD 0805 0.1W 1% 150V	R1, R2	R0805-1%	R-0805-1% 5.1K	2
1k	SMD 0805 0.1W 1% 150V	R3, R4	R0805-1%	R-0805-1% 1K	2
470R	SMD 0805 0.1W 1% 150V	R5, R9	R0805-1%	R-0805-1% 470R	2
10K	SMD 0805 0.1W 5% 150V	R6, R7, R11, R12, R15, R16, R17, R25	R0805	R-0805 10K	8
20K	SMD 0805 0.1W 5% 150V	R13, R14, R18, R19, R20, R24	R0805	R-0805 20K	6
100K	SMD 0805 0.1W 1% 150V	R21	R0805-1%	R-0805-1% 100K	1
4K7	SMD 0805 0.1W 5% 150V	R22, R23	R0805	R-0805 4K7	2
NEOPIXEL	Header, 3-Pin	RGB	HDR1X3	Header 3	1
SPI	Header, 5-Pin	SP1	HDR1X5	Header 5	1
Header 2	Header, 2-Pin	SPKR1	HDR1X2	Header 2	1
MMBT5551	160V 0.6A 300MHz	T1, T2	SOT23	MMBT5551	2
LD1117S33CTR		U1	SOT223	LD1117S33CTR	1
L7805CD2T	5V Precision 1A Regulator	U2	D2PAK-2	L7805CD2T	1
FT232RL	USB UART Asynchronous Serial Data Transfer Chip, 28-pin SSOP, Tape and Reel	U3	SSOP-28_N	FT232RL-Reel	1
LM4889MA	1W Audio Power Amplifier, 8-pin Narrow SOIC	U4	M08A_N	LM4889MA	1
Screw Terminal 5mm 2-Way	Screw Terminal 5mm 2-Way	VEXT, Vin1, Vin2	TERM2 3.5mm	Screw Terminal-5mm-2Way	3