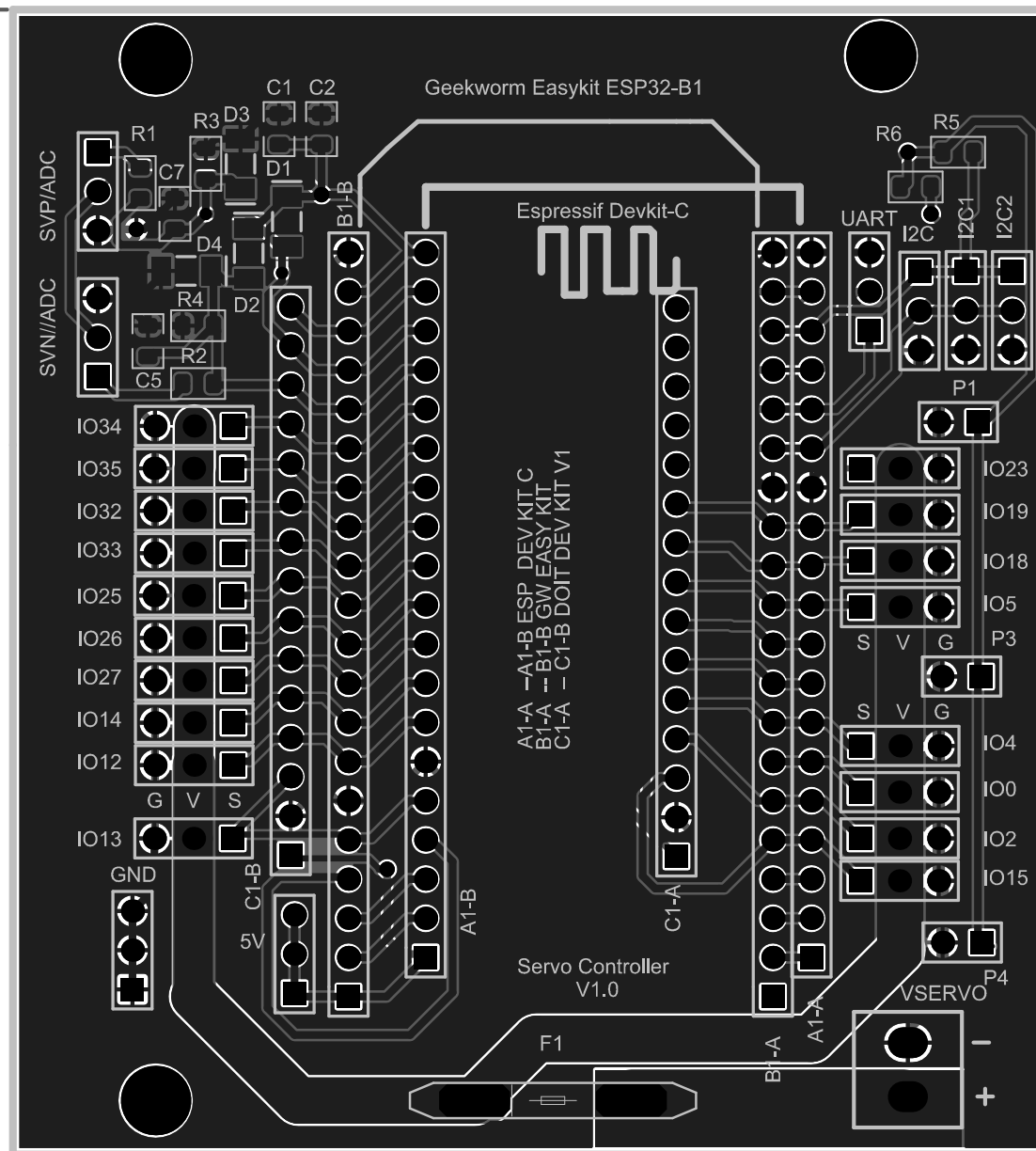


Title		
Size	Number	Revision
A3		
Date:	05/09/2017	Sheet of
File:	C:\esp32dev\ESP32Servo.SchDoc	Drawn By:

74.25 (mm)



66.96 (mm)

Comment	Description	Designator	Footprint	LibRef	Quantity
Header 3	Header, 3-Pin	5V, GND, I2C, I2C1, I2C2, IO0, IO2, IO4, IO5, IO12, IO13, IO14, IO15, IO18, IO19, IO23, IO25, IO26, IO27, IO32, IO33, IO34, IO35, SVN//ADC, SVP/ADC, UART	HDR1X3	Header 3	26
Header 19	Header, 19-Pin	A1-A, A1-B	HDR1X19	Header 19	2
Header 20	Header, 20-Pin	B1-A, B1-B	HDR1X20	Header 20	2
1u	SMD-0805 50V Y5V +80/-20%	C1, C5, C7	C0805(2013)	C-0805 50V 1u	3
Header 15	Header, 15-Pin	C1-A, C1-B	HDR1X15	Header 15	2
100n	SMD-0805 50V Y5V +80/-20%	C2	C0805(2013)	C-0805 50V 100n	1
M4	Default Diode	D1, D2, D4	1N4148 SMD	Diode	3
1n4148	Default Diode	D3	1N4148 SMD	Diode	1
F1	Fuse	F1	MFR500	Fuse 1	1
3mm Hole		H1, H3, H4	Hole3mm	3mm Hole	3
Header 2	Header, 2-Pin	P1, P3, P4	HDR1X2	Header 2	3
1k	SMD 0805 0.1W 5% 150V	R1, R2, R3, R4	R0805	R-0805	4
4k7	SMD 0805 0.1W 5% 150V	R5, R6	R0805	R-0805	2
PORT 2 pina_0.2		VSERVO	TERM2 3.5mm	PORT 2 pina_0.2_1	1